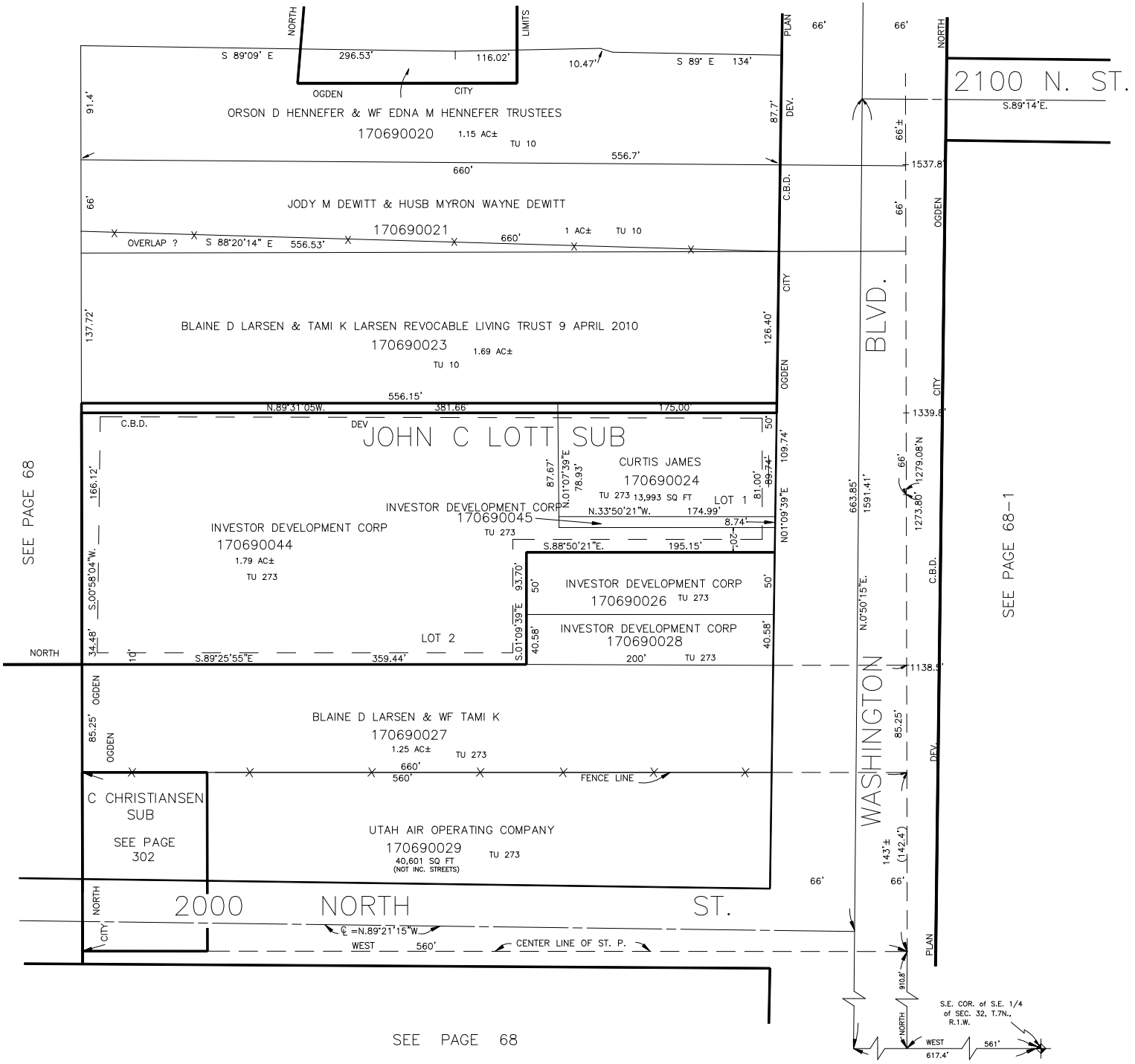


PART OF S.E. 1/4
SECTION 32, T.7N., R.1W., S.L.B. & M.

IN OGDEN CITY
SCALE 1" = 60'

TAXING UNIT: 10,273

SEE PAGE 68



SEE PAGE 68

SEE PAGE 68-1

SEE PAGE 68

S.E. COR. of S.E. 1/4
of SEC. 32, T.7N.,
R.1W.